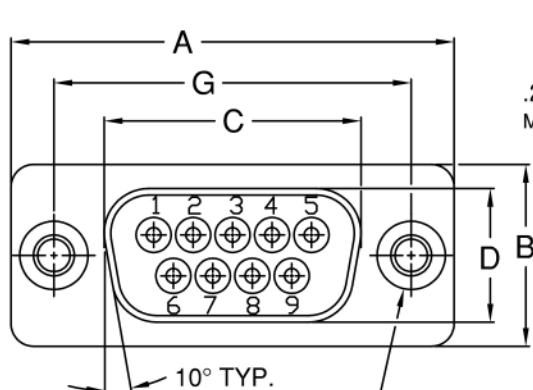
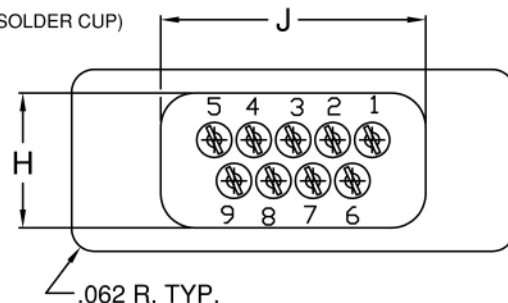
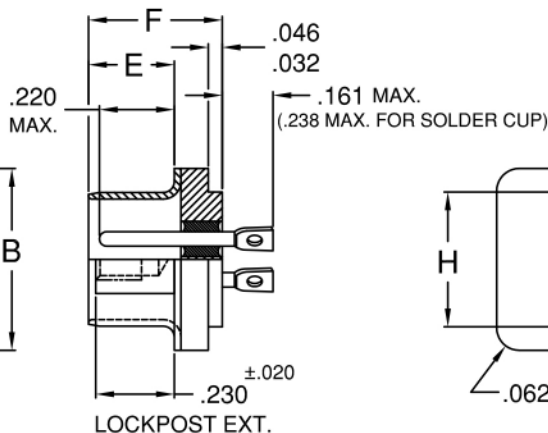


MINIATURE HERMETIC ELECTRONIC CONNECTORS—DRH SERIES

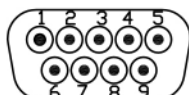
MIL-DTL-24308 TYPE D-SUB, COMMERCIAL EQUAL
HERMETIC GLASS-TO-METAL SEALED
(VACUUM / PRESSURE FEED THRU)



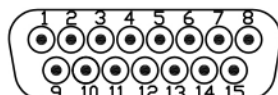
BLANK, .120 DIA. THRU,
OR LOCKPOST #4-40 UNC-2B
WITH OUTSIDE DIA .187±.005



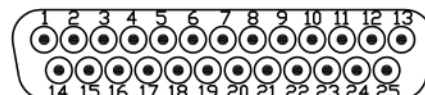
PART NO.	A	B	C	D	E	F	G	H	J
DRH1-9P-*	±.015	±.010	±.010	±.010	±.010	±.020	±.005	±.010	±.010
DRH2-15P-*	1.213	.498	.703	.366	.235	.367	.984	.369	.725
DRH3-25P-*	1.541	.498	1.029	.366	.235	.367	1.312	.369	.932
DRH4-37P-*	2.088	.498	1.571	.366	.230	.362	1.852	.369	1.479
DRH5-50P-*	2.729	.498	2.219	.366	.230	.362	2.500	.369	2.125
DRH5-50P-*	2.635	.610	2.115	.477	.230	.362	2.406	.500	2.000



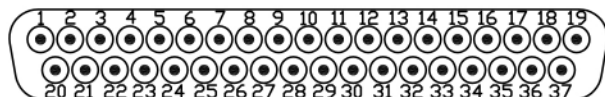
9 PINS, SHELL SIZE 1



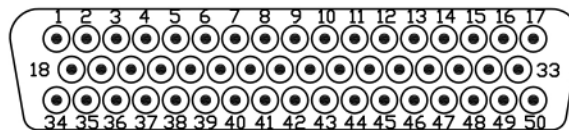
15 PINS, SHELL SIZE 2



25 PINS, SHELL SIZE 3



37 PINS, SHELL SIZE 4



50 PINS, SHELL SIZE 5

ENGAGING FACE PIN INSERTS

*ADD SUFFIX NUMBER FOR MODIFICATION (THRU HOLES, LOCKPOSTS, PLATING, PIN TYPE) - CONSULT FACTORY.

MATERIAL: STANDARD IS CRS SHELL AND 52 NICKEL ALLOY PINS.

STANDARD PIN IS EYELET TYPE. OTHER PIN TYPES ALSO AVAILABLE (SOLDER CUP, STRAIGHT) - CONSULT FACTORY.

STANDARD FINISH IS TIN PLATED SHELL AND PINS.

OTHER FINISHES ALSO AVAILABLE (GOLD, NICKEL, etc.) - CONSULT FACTORY.

SPECIALS CAN BE SUPPLIED TO MEET CUSTOMER SPECIFICATIONS - CONSULT FACTORY.

OUR CONNECTORS MATE WITH ANY PLUG WITH SOCKET CONTACTS WHICH MEET THE DIMENSIONAL REQUIREMENTS OF MIL-DTL-24308

GENERAL SPECIFICATIONS

AIR LEAKAGE: 1.04×10^{-5} CM³/SEC AT 15psi

INSULATION RESISTANCE: 5,000 megohms AT 500VDC

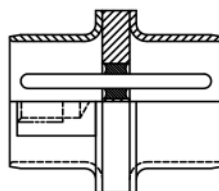
OPERATING TEMPERATURE: -67°F TO +257°F (-55°C TO +125°C)

CURRENT RATING: 5 AMPS

**ALSO AVAILABLE
THRU BULKHEAD
DRTBH SERIES**

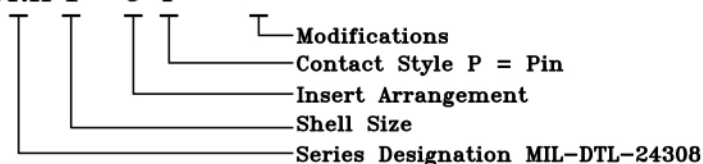
**STANDARD
LOCKPOSTS
THRU HOLES**

CONSULT FACTORY



PART NUMBERING SYSTEM

DRH 1 - 9 P - ***



Detronics Corporation

13071 ROSECRANS AVE, SANTA FE SPRINGS, CA 90670

TELE: (626) 579-7130 FAX: (626) 579-1936

www.detronics.com