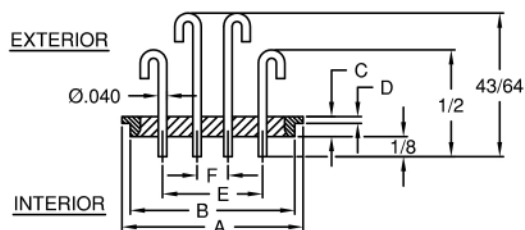
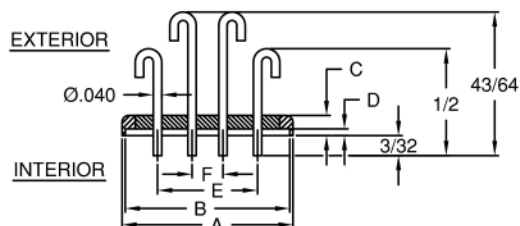


MINIATURE HERMETIC ELECTRONIC MULTI-TERMINAL HEADERS

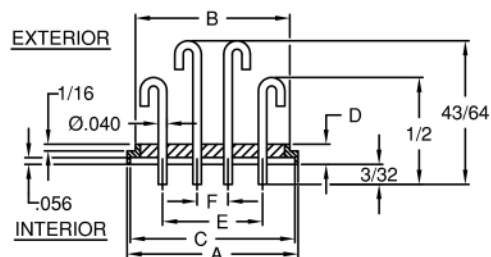
MULTI-TERMINAL HEADERS, COMMERCIAL EQUAL HERMETIC GLASS-TO-METAL SEALED (VACUUM / PRESSURE FEED THRUS)



BODY	AØ	BØ	C	D	EØ	FØ	PATTERN AVAILABLE
375F	.375	.343	.093	.050	.150	--	26,28 THRU 48
625F	.625	.590	.093	.031	.298	--	28 THRU 88
730F	.730	.625	.093	.031	.375	--	28 THRU 88
800F	.800	.770	.093	.031	.468	--	28 THRU 88
900F	.900	.840	.093	.062	.498	.212	94 THRU 144
1062F	1.062	.998	.093	.031	.656	.312	131 THRU 211

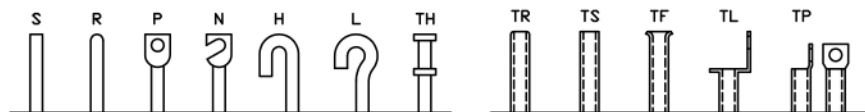


BODY	AØ	BØ	C	D	EØ	FØ	PATTERN AVAILABLE
600R	.600	.570	.145	.050	.298	--	28 THRU 88
800R	.800	.770	.145	.050	.468	--	28 THRU 88
900R	.900	.870	.145	.050	.498	.212	94 THRU 144
1000R	1.000	.970	.145	.050	.656	.312	131 THRU 211



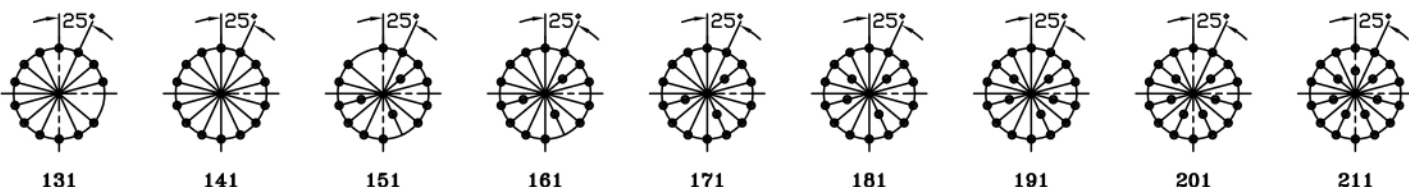
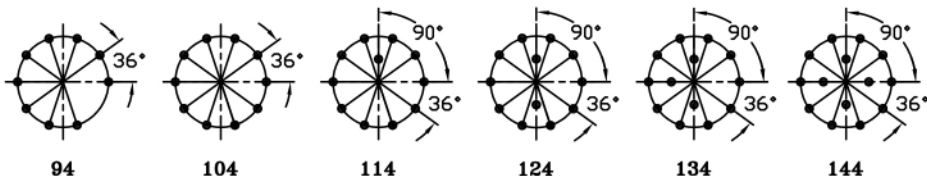
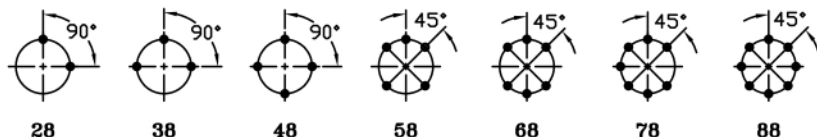
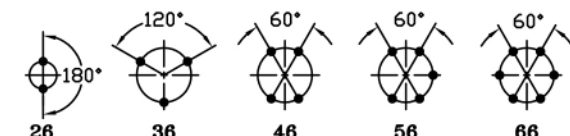
BODY	AØ	BØ	CØ	D	EØ	FØ	PATTERN AVAILABLE
600S	.600	.562	.570	.150	.298	--	28 THRU 88
800S	.800	.770	.766	.150	.468	--	28 THRU 88
900S	.900	.831	.870	.150	.498	.212	94 THRU 144
1000S	1.000	.960	.970	.150	.656	.312	131 THRU 211

TERMINALS EXTERIOR

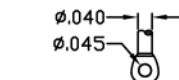
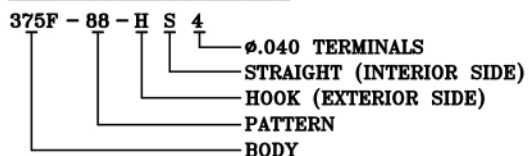


Above can be supplied with S or P style on interior side.
Styles marked * can be supplied with R style on interior side.

Above can be supplied with TS style on interior side.



PART NUMBERING SYSTEM:



FLATTEN AND PIERCE (P)

* WHEN TERMINAL IS TO BE FLATTENED AND PIERCED ON INTERIOR SIDE WITH .045 DIA. HOLE, ADD 1/32 TO ALL PIN LENGTH DIMENSIONS.
ALL OF THE ABOVE PARTS ARE AVAILABLE IN THE FOLLOWING TERMINAL STYLES ON THE EXTERIOR SIDE S, P, H, L, TH AND TS.
THE TH AND TS STYLES WILL HAVE ALL TERMINALS 1/2 LONG PRIOR TO FLATTEN AND PIERCE (IF REQUIRED).
MATERIAL: STANDARD IS CRS BODY AND 52 NICKEL ALLOY PINS.
STANDARD FINISH IS BRIGHT TIN PLATED BODY AND PINS, OTHER FINISHES AVAILABLE ON REQUEST.

GENERAL SPECIFICATIONS

AIR LEAKAGE: 1×10^{-8} CM³/SEC AT 15psi
INSULATION RESISTANCE: 10,000 megohms AT 500VDC
OPERATING TEMPERATURE: -85°F TO +257°F (-65°C TO +125°C)
TOLERANCES: DECIMAL ±.005; FRACTIONAL ±1/64

CONTACT RATING:

SIZE 20: 5 AMPS
SIZE 16: 10 AMPS

Detronics Corporation

13071 ROSECRANS AVE, SANTA FE SPRINGS, CA 90670

TELE: (626) 579-7130 FAX: (626) 579-1936

www.detronics.com